

Road Plate

Pedestrian & Vehicle Safe Steel Road Plate

Advantages

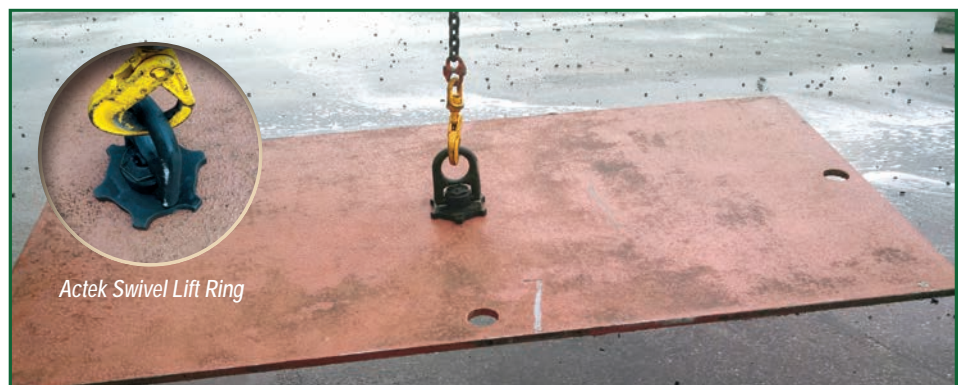
The superior strength A-36 steel plates are pedestrian and vehicle safe, and include an optional single or double flush-mounted lifting point(s) to allow for easy, balanced handling with no protrusion above the plate surface.

Options:

- Flush Mounted, Center-Balanced One or Two Point Lifting
- Quick-Connect Tool
- Non-Skid Surface
- Actek Swivel Lift Ring

Standard Sizes:

- 5x10 ft. (2,042 lbs.)
- 5x12 ft. (2,450 lbs.)
- 6x10 ft. (2,450 lbs.)
- 6x12 ft. (2,940 lbs.)
- 8x10 ft. (3,267 lbs.)
- 8x12 ft. (3,921 lbs.)
- 8x16 ft. (5,228 lbs.)
- 8x20 ft. (6,534 lbs.)



End Plates

Efficiency's road plate can be used to close off the ends of a trench shield when loaded against the shield's sidewalls, and not directly against the spreaders. Allows follow the manufacturer's tabulated data for proper use.

